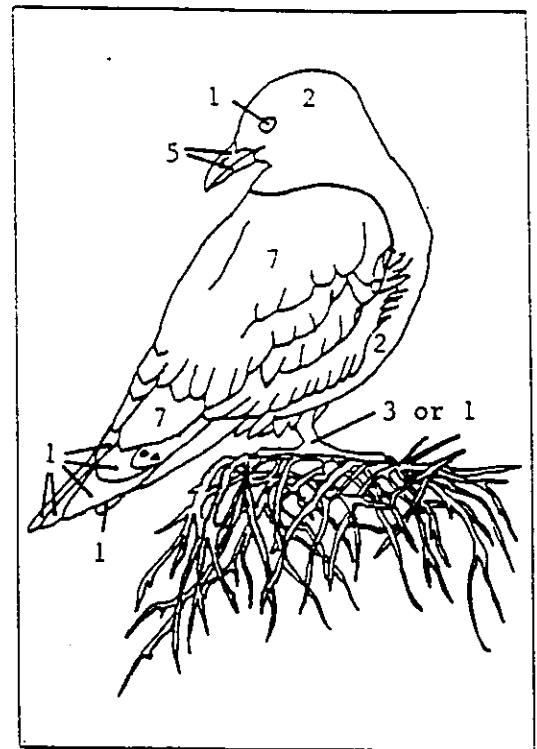
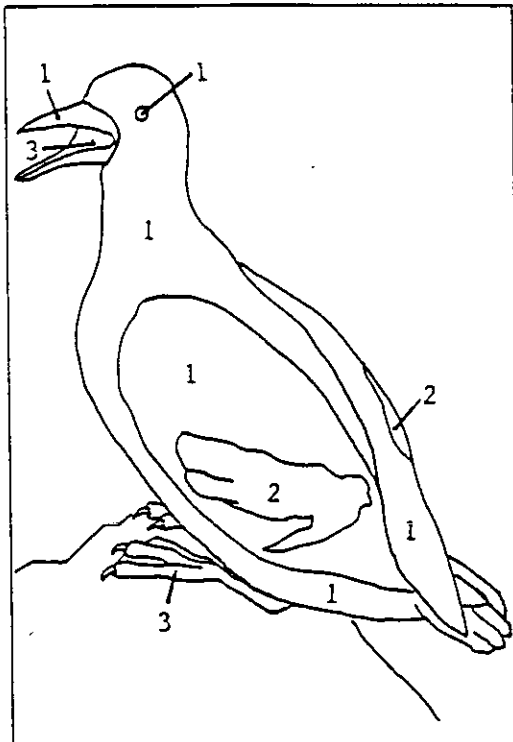


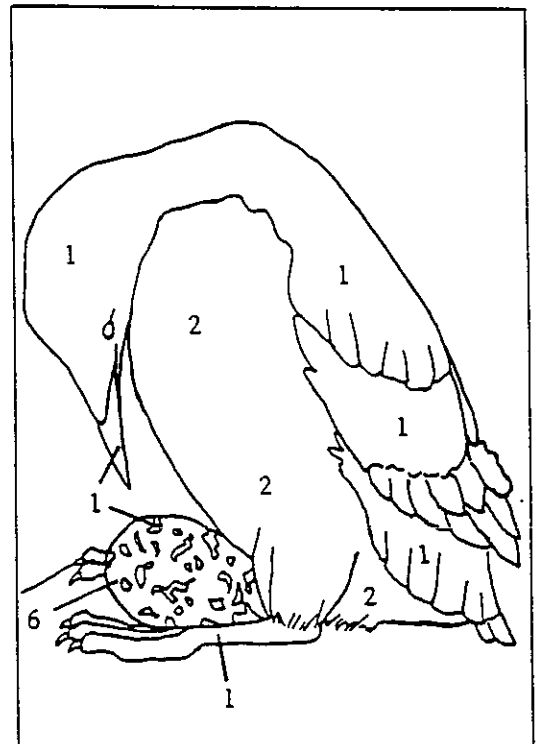
Tufted Puffin



Red-legged or Black-legged Kittiwake



Pigeon Guillemot



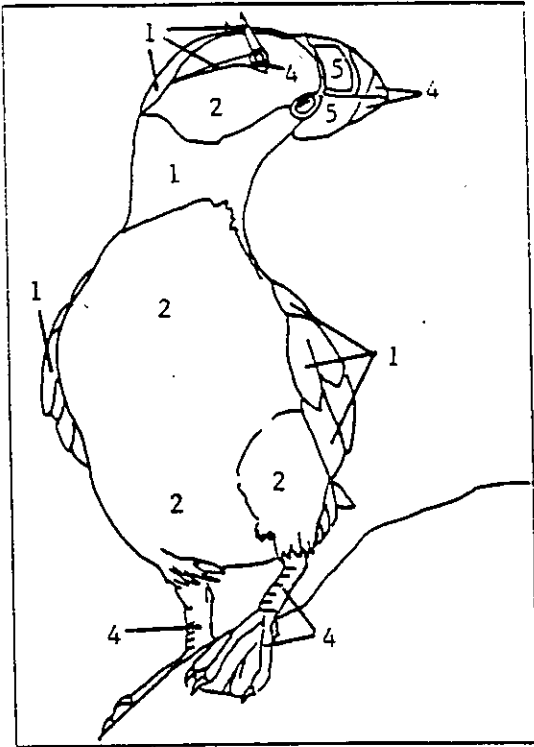
Common Murre

1 = black
2 = white

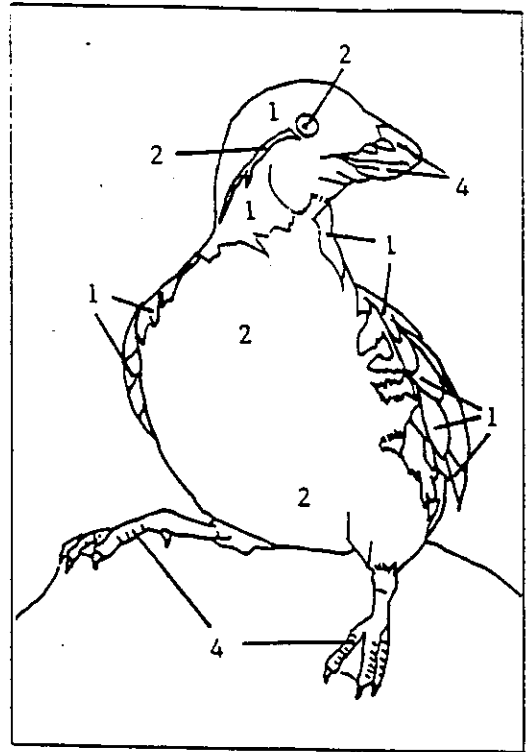
3 = red
4 = orange

5 = yellow
6 = blue/green

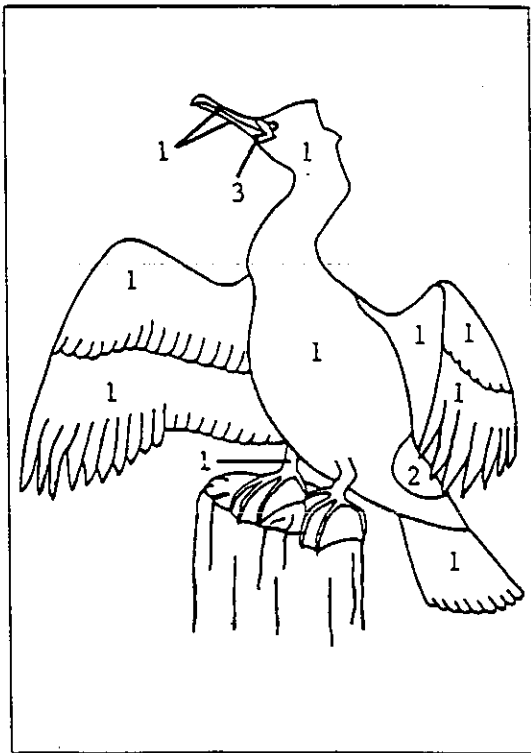
7 = gray



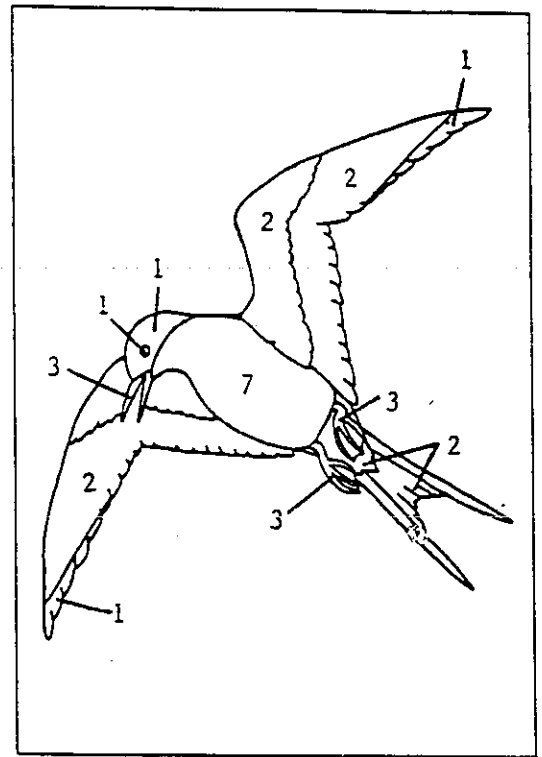
Horned Puffin



Parakeet Auklet



Pelagic Cormorant



Arctic Tern

1 = black
2 = white

3 = red
4 = orange

5 = yellow
6 = blue/green

7 = gray

Seabird Identification Checklist

Bird Size	Bill Shape	Wing Shape	Tail Shape	Feeding Method	Nesting Site	Bird Name

Draw or write the shape of the bill, wing, and tail in the space above with the help of these examples:

Bill Shape:
Long, pointed



Short, stubby



Long, hooked



Long, tube nose



Wing Shape:
Short, round



Long, pointed



Tail Shape:
Rounded



Forked



Square



Long feathers in center



Draw the whole bird on the back of the page, if you'd like.

Write the bird's size, feeding method and type of nest site in the space above with the help of these examples:

Bird Size:

Smaller than a duck

Duck size

Larger than a duck

Feeding Method:

Dives from air to surface

Sits on surface and feeds

Dives under water

Other

Nest Site:

Flat ground

Burrow or crevice

Ledge of cliff

Rock piles

Forest

Other

